

# STEEL PRICE REPORT

SAMPLE ISSUE

## Daily steel benchmarks

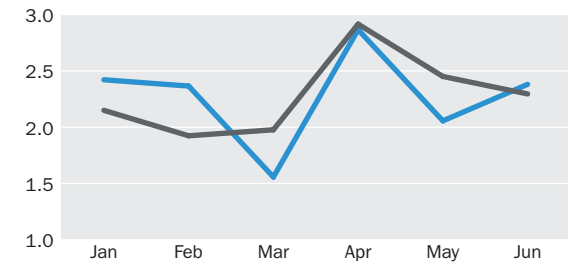
	Platts symbol	Unit	Range	Midpoint	% change
<b>Semi-finished</b>					
Billet China domestic production Tangshan inc. 17% VAT	SB01032	Yuan/mt	2980.00–2980.00	2980.00	-0.67
Billet FOB Black Sea	STBLB00	\$/mt		505.00	0.00
<b>Hot-rolled coil</b>					
HRC FOB Black Sea	STHRB00	\$/mt	505.00–510.00	507.50	0.00
HRC CIF US Gulf Coast	STHRG00	\$/st	560.00–580.00	570.00	0.00
HRC CIF Antwerp	STHRA00	€/mt	415.00–425.00	420.00	0.00
HRC EXW Indiana	STHRI00	\$/st	660.00–680.00	670.00	0.00
HRC DDP Northwest Europe	AAWVM00	€/mt	440.00–450.00	445.00	0.00
HRC EXW Ruhr	STHRE00	€/mt	428.00–436.00	432.00	0.00
HRC CPT Moscow (weekly)	AAXJI00	Rb/mt	18130.00–18640.00	18385.00	-0.22
<b>Cold-rolled coil</b>					
CRC FOB Black Sea	STRRB00	\$/mt	590.00–600.00	595.00	0.00
CRC CIF US Gulf Coast	STRRG00	\$/st	660.00–680.00	670.00	0.00
CRC CIF Antwerp	STRRA00	€/mt	480.00–485.00	482.50	0.00
CRC EXW Ruhr	STRRE00	\$/st	508.00–516.00	512.00	0.00
CRC EXW Indiana	STRRI00	\$/st	790.00–800.00	795.00	0.00
CRC DDP Northwest Europe	AAWVB00	€/mt	525.00–535.00	530.00	0.00
<b>Steel Plate</b>					
Plate US EXW Southeast	STPRI00	\$/mt	800.00–820.00	810.00	0.00
Plate CIF US Gulf Coast	STPRG00	\$/st	670.00–690.00	680.00	0.00
Plate CIF Antwerp	STPRA00	€/mt	425.00–435.00	430.00	0.00
Plate EXW Ruhr	STPRE00	€/mt	515.00–525.00	520.00	+0.39
<b>Rebar</b>					
Rebar FOB Turkey	STCBM00	\$/mt	568.00–575.00	571.50	+0.44
Rebar FOB China (weekly)	STCBZ02	\$/mt	488.00–492.00	490.00	+1.55
Rebar CIF US Gulf Coast (Houston)	STCBG00	\$/st	550.00–560.00	555.00	0.00
Rebar EXW US Southeast	STCB000	\$/st	630.00–640.00	635.00	0.00
Rebar EXW Northwest Europe	STCBE00	€/mt	453.00–459.00	456.00	0.00
Rebar HRB400 18-25mm China domestic production Beijing trader inc. 17% VAT	SB01198	Yuan/mt	3280.00–3300.00	3290.00	0.00
<b>The Steel Index (TSI)</b>					
TSI HRC USA (FOB Midwest mill)	TS01018	\$/st	–	664.00	+0.76
TSI HRC Northern Europe (EXW)	TS01015	€/mt	–	435.00	0.00
TSI HRC Southern Europe (EXW)	TS01016	€/mt	–	406.00	0.00
TSI HRC (SAE) Asean imports (CFR Asean port)	TS01041	\$/mt	–	547.00	+0.18

For Platts assessment methodology, please go to: <http://platts.com/IM.Platts.Content/MethodologyReferences/MethodologySpecs/steel.pdf>  
For TSI methodology, please go to <https://www.thesteelindex.com/en/procedures-methodology/>

## Contents

Platts steel price trackers	2
Flat products	2
Long products	4
Pipe and tube	5
Stainless	6
Semi-finished	7
Steel Mill Economics: Global Spreads	7
Steel assessments currency and unit comparisons	8
Exchange steel futures	8
Steel industry data	9

## Sample graph



## Price data. Your way.

**WANT YOUR VERY OWN, UNIQUE STEEL PRICE REPORT DELIVERED EACH DAY?** Another valuable pricing tool that comes with your *Platts Daily Briefing* subscription is the customizable Price Snapshot Tool. This feature allows you to choose the price series most valuable to you. The prices you select are then displayed each day at the top of your Daily Briefing email. Your Snapshot will display the most up-to-date price, the +/- change value and the percentage change.

To customize your Snapshot right now, please visit <https://www.steelbb.com/pricesnapshot/>

## Platts steel price trackers

Tracker name	Platts symbol	Value	Change	Tracker name	Platts symbol	Value	Change
Steel price tracker World	SBIAX00	197.86	+0.03	Long products price tracker China domestic	SBIAJ00	179.01	0.00
HRC price tracker World	SBIAH00	540.17	+0.25	Long products price tracker China exports	SBIAK00	129.44	+0.77
Rebar price tracker World	SBIAQ00	525.00	+0.67	Long products price tracker East Asia imports	SBIAL00	252.92	0.00
Stainless price tracker World	SBIAW00	92.51	+0.11	Long products price tracker Black Sea exports	SBIAI00	117.96	0.00
Tube & pipe price tracker World	SBIAV00	101.37	0.00	Long products price tracker Europe domestic	SBIAM00	117.96	0.00
				Long products price tracker North America domestic	SBIAN00	225.30	0.00
Flat products price tracker China domestic	SBIB00	156.12	0.00	Steel price tracker China domestic	SBIA000	167.72	0.00
Flat products price tracker China exports	SBIA000	99.58	+0.28	Steel price tracker Middle East imports	SBIAU00	97.74	0.00
Flat products price tracker East Asia imports	SBIA000	179.83	0.00	Steel price tracker Latin America exports	SBIAV00	212.01	0.00
Flat products price tracker Black Sea exports	SBIAA00	103.76	-0.47	Tube & pipe price tracker North America	SBIA000	99.31	0.00
Flat products price tracker Europe domestic	SBIAE00	146.35	+0.03				
Flat products price tracker Latin America domestic	SBIAF00	146.35	+0.03				
Flat products price tracker North America domestic	SBIA000	206.81	0.00				

## Flat products

	Frequency	Platts symbol	Unit	Range	Midpoint	% change
<b>Hot-rolled coil export assessments</b>						
HRC FOB Black Sea	Daily	STHRB00	\$/mt	505.00–510.00	507.50	0.00
HRC Russia Black Sea exports FOB	Monthly	SB01151	\$/mt	525.00–540.00	532.50	+0.47
HRC Turkey exports FOB	Weekly	SB01155	\$/mt	565.00–570.00	567.50	+0.89
HRC China exports FOB Shanghai	Monthly	SB01141	\$/mt	600.00–615.00	607.50	+1.67
HRC Ukraine Black Sea exports FOB	Monthly	SB01157	\$/mt	515.00–525.00	520.00	+0.97
<b>Hot-rolled coil import assessments</b>						
HRC CIF US Gulf Coast	Daily	STHRG00	\$/st	560.00–580.00	570.00	0.00
HRC CIF Antwerp	Daily	STHRA00	€/mt	415.00–425.00	420.00	0.00
HRC East Asia imports CFR	Weekly	SB01142	\$/mt	530.00–560.00	545.00	+0.93
HRC Europe imports CIF Southern Europe port	Monthly	SB01143	\$/mt	405.00–415.00	410.00	-2.38
HRC Middle East imports CFR Persian Gulf port	Monthly	SB01146	\$/mt	570.00–600.00	585.00	-2.50
HRC Turkey imports CFR Turkish port	Monthly	SB01156	\$/mt	530.00–555.00	542.50	0.00
<b>Hot-rolled coil domestic assessments</b>						
HRC EXW Indiana	Daily	STHRI00	\$/st	660.00–680.00	670.00	0.00
HRC DDP Northwest Europe	Daily	AAWVM00	€/mt	440.00–450.00	445.00	0.00
HRC EXW Ruhr	Daily	STHRE00	€/mt	428.00–436.00	432.00	0.00
HRC Southern Europe domestic production EXW	Weekly	SB01152	€/mt	410.00–415.00	412.50	-0.60
HRC Q235 5.5mm China domestic production Shanghai inc. 17% VAT	Daily	SB01260	Yuan/mt	3390.00–3420.00	3405.00	+0.44
HRC Turkey domestic production EXW	Weekly	SB01154	\$/mt	570.00–580.00	575.00	+0.88
HRC Mexico domestic production delivered	Monthly	SB01145	\$/mt	772.00–776.00	774.00	+0.06
HRC India domestic production EXW inc. duty and 4% VAT	Monthly	SB01144	Rupee/mt	43098.00–44262.00	43680.00	-2.60
HRC Brazil domestic production EXW inc. 18% ICMS tax	Monthly	SB01138	Real/mt	2750.00–2887.00	2818.50	-0.07
HRC Northern Europe domestic production EXW	Weekly	SB01149	€/mt	420.00–430.00	425.00	+0.59
HRC CPT Moscow	Weekly	AAXJI00	Rb/mt	18130.00–18640.00	18385.00	-0.22
HR Sheet CPT Moscow	Weekly	AAXJH00	Rb/mt	18730.00–19240.00	18985.00	-0.21

## Flat products (continued)

	Frequency	Platts symbol	Unit	Range	Midpoint	% change
<b>Cold-rolled coil export assessments</b>						
CRC Russia Black Sea exports FOB	Monthly	SB01090	\$/mt	600.00–605.00	602.50	-0.41
CRC China exports FOB Shanghai	Weekly	SB01083	\$/mt	595.00–605.00	600.00	0.00
CRC Brazil exports FOB Brazilian port	Monthly	SB01081	\$/mt	585.00–615.00	600.00	-0.33
CRC FOB Black Sea	Daily	STRRB00	\$/mt	590.00–600.00	595.00	0.00
<b>Cold-rolled coil import assessments</b>						
CRC East Asia imports CFR	Monthly	SB01084	\$/mt	620.00–680.00	650.00	0.00
CRC Europe imports CIF Southern Europe port	Monthly	SB01085	\$/mt	470.00–490.00	480.00	-0.52
CRC Turkey imports CFR Turkish port	Monthly	SB01093	\$/mt	620.00–640.00	630.00	+2.02
CRC CIF US Gulf Coast	Daily	STRRG00	\$/st	660.00–680.00	670.00	0.00
CRC CIF Antwerp	Daily	STRRA00	€/mt	480.00–485.00	482.50	0.00
<b>Cold-rolled coil domestic assessments</b>						
CRC Southern Europe domestic production EXW	Weekly	SB01091	€/mt	490.00–500.00	495.00	0.00
CRC China domestic production Shanghai inc. 17% VAT	Weekly	SB01082	Yuan/mt	4000.00–4120.00	4060.00	+0.37
CRC Turkey domestic production EXW	Monthly	SB01092	\$/mt	680.00–695.00	687.50	0.00
CRC Mexico domestic production delivered	Monthly	SB01086	\$/mt	862.00–870.00	866.00	+0.23
CRC Brazil domestic production EXW inc. 18% ICMS tax	Monthly	SB01080	Real/mt	3260.00–3340.00	3300.00	-0.06
CRC EXW Ruhr	Daily	STRRE00	€/mt	508.00–516.00	512.00	0.00
CRC EXW Indiana	Daily	STRRI00	\$/st	790.00–800.00	795.00	0.00
CRC DDP Northwest Europe	Daily	AAWMB00	€/mt	525.00–535.00	530.00	0.00
<b>Hot dip galvanized assessments</b>						
HDG China export FOB Shanghai	Monthly	SB01119	\$/mt	655.00–660.00	657.50	-0.75
HDG East Asia imports CFR	Monthly	SB01120	\$/mt	670.00–730.00	700.00	0.00
HDG Middle East imports CFR Persian Gulf port	Monthly	SB01122	\$/mt	800.00–840.00	820.00	-1.80
HDG Europe imports CIF Southern Europe port	Monthly	SB01121	€/mt	550.00–590.00	570.00	0.00
HDG Turkey imports CFR Turkish port	Monthly	SB01128	\$/mt	715.00–740.00	727.50	+0.34
HDG North America imports CFR Gulf port	Monthly	SB01124	\$/st	710.00–730.00	720.00	0.00
HDG Northern Europe domestic production EXW base price	Monthly	SB01125	€/mt	500.00–520.00	510.00	-1.92
HDG Southern Europe domestic production EXW base price	Monthly	SB01126	€/mt	460.00–480.00	470.00	-1.05
HDG North America domestic production Ex-mill US Midwest	Monthly	SB01123	\$/st	820.00–830.00	825.00	0.00
HDG China domestic production Shanghai inc. 17% VAT	Monthly	SB01118	Yuan/mt	4440.00–4510.00	4475.00	-0.44
HDG Brazil domestic production EXW inc. 18% ICMS tax	Monthly	SB01117	Real/mt	3673.00–3828.00	3750.50	-0.05
<b>Plate assessments</b>						
Plate CIS export FOB	Monthly	SB01179	\$/mt	530.00–560.00	545.00	0.00
Plate commercial grade China export FOB Shanghai	Monthly	SB01180	\$/mt	505.00–510.00	507.50	-1.93
Plate Europe imports CIF Southern Europe port	Monthly	SB01182	€/mt	420.00–440.00	430.00	0.00
Plate Turkey imports CFR Turkish port	Monthly	SB01187	\$/mt	545.00–570.00	557.50	+0.90
Plate A36 East Asia imports CFR	Monthly	SB01176	\$/mt	525.00–555.00	540.00	0.00
Plate CIF US Gulf Coast	Daily	STPGM00	\$/mt	738.54–760.58	749.56	0.00
Plate CIF Antwerp	Daily	STPRA00	€/mt	425.00–435.00	430.00	0.00
Plate China domestic production Shanghai inc. 17% VAT	Monthly	SB01178	Yuan/mt	3460.00–3490.00	3475.00	-0.57
Plate Southern Europe domestic production EXW	Weekly	SB01185	€/mt	500.00–510.00	505.00	0.00
Plate Turkey domestic production EXW	Monthly	SB01186	\$/mt	590.00–610.00	600.00	+0.84
Plate A36 Brazil domestic production EXW inc. 18% ICMS tax	Monthly	SB01175	Real/mt	2500.00–2615.00	2557.50	-1.08
Plate CIF US Gulf Coast	Daily	STPRG00	\$/st	670.00–690.00	680.00	0.00
Plate EXW Ruhr	Daily	STPRE00	€/mt	515.00–525.00	520.00	+0.39

## Flat products (continued)

	Frequency	Platts symbol	Unit	Range	Midpoint	% change
<b>TSI flat-rolled prices</b>						
TSI HRC USA (FOB Midwest mill)	Daily	TS01018	\$/st	–	664.00	+0.76
TSI CRC USA (FOB Midwest mill)	Weekly	TS01005	\$/st	–	774.00	+2.11
TSI HDG USA (FOB Midwest mill)	Weekly	TS01010	\$/st	–	832.00	+2.84
TSI Plate USA (FOB Midwest mill)	Weekly	TS01025	\$/st	–	807.00	+0.12
TSI HRC Northern Europe (EXW)	Daily	TS01015	€/mt	–	435.00	0.00
TSI CRC Northern Europe (EXW)	Weekly	TS01002	€/mt	–	515.00	-1.53
TSI HDG Northern Europe (EXW)	Weekly	TS01007	€/mt	–	560.00	-0.18
TSI Plate Northern Europe (EXW)	Weekly	TS01023	€/mt	–	522.00	0.00
TSI HRC Southern Europe (EXW)	Daily	TS01016	€/mt	–	406.00	0.00
TSI CRC Southern Europe (EXW)	Weekly	TS01003	€/mt	–	496.00	-0.80
TSI HDG Southern Europe (EXW)	Weekly	TS01008	€/mt	–	541.00	+0.37
TSI Plate Southern Europe (EXW)	Weekly	TS01024	€/mt	–	496.00	-0.60
TSI HRC (SAE) Asean imports (CFR Asean port)	Daily	TS01041	\$/mt	–	547.00	+0.18
TSI CRC Asean imports (CFR Asean port)	Weekly	TS01042	\$/mt	–	614.00	0.00
TSI Plate Asean imports (CFR Asean port)	Weekly	TS01043	\$/mt	–	524.00	+0.58
TSI HRC China to Asia exports (FOB China port)	Weekly	TS01013	\$/mt	–	513.00	0.00
TSI HRC China to Europe/USA exports (FOB China port)	Weekly	TS01014	\$/mt	–	520.00	0.00
TSI CRC China to Europe/USA exports (FOB China port)	Weekly	TS01001	\$/mt	–	607.00	0.00
TSI HRC Turkey (EXW)	Weekly	TS01017	\$/mt	–	575.00	+0.35
TSI CRC Turkey (EXW)	Weekly	TS01004	\$/mt	–	683.00	+0.29
TSI HDG Turkey (EXW)	Weekly	TS01009	\$/mt	–	773.00	+0.13

## Long products

	Frequency	Platts symbol	Unit	Range	Midpoint	% change
<b>Rebar export prices</b>						
Rebar FOB Turkey	Daily	STCBM00	\$/mt	525.00–530.00	571.50	+0.44
Rebar FOB China	Weekly	STCBZ02	\$/mt	525.00–530.00	490.00	+1.55
<b>Rebar import prices</b>						
Rebar CIF US Gulf Coast (Houston)	Daily	STCBG00	\$/st	525.00–530.00	555.00	0.00
Rebar East Asia imports CFR	Weekly	SB01195	\$/mt	525.00–530.00	502.50	+1.01
Rebar Middle East imports CFR Gulf States port	Monthly	SB01201	\$/mt	525.00–530.00	580.00	+1.75
<b>Rebar domestic prices</b>						
Rebar EXW US Southeast	Daily	STCBC00	\$/st	525.00–530.00	635.00	0.00
Rebar EXW Northwest Europe	Daily	STCBE00	€/mt	525.00–530.00	456.00	0.00
Rebar HRB400 18-25mm China domestic production Beijing Trader inc. 17% VAT	Daily	SB01198	Yuan/mt	525.00–530.00	3290.00	0.00
Rebar Middle East domestic production EXW	Monthly	SB01200	\$/mt	525.00–530.00	653.50	-1.58
Rebar North America domestic production Ex-mill US Midwest	Weekly	SB01202	\$/st	525.00–530.00	655.00	0.00
Rebar HRB400 18-25mm China domestic production Shanghai inc. 17% VAT	Weekly	SB01259	Yuan/mt	525.00–530.00	3235.00	+1.89
Rebar CPT Moscow	Weekly	AAXJG00	Rb/mt	525.00–530.00	19300.00	0.00

## Long products (continued)

	Frequency	Platts symbol	Unit	Range	Midpoint	% change
<b>Wire rod export prices</b>						
Wire rod mesh quality Black Sea exports FOB	Monthly	SB01243	\$/mt	525.00–530.00	540.00	0.00
Wire rod SAE1008 6.5mm China exports FOB Shanghai	Weekly	SB01261	\$/mt	525.00–530.00	497.50	+2.05
Wire rod mesh quality Latin America exports FOB Latin America port	Monthly	SB01248	\$/mt	525.00–530.00	699.00	+7.95
Wire rod mesh quality Turkey exports FOB Turkish port	Monthly	SB01251	\$/mt	525.00–530.00	595.00	+2.59
<b>Wire rod import prices</b>						
Wire rod mesh quality East Asia imports CFR	Monthly	SB01245	\$/mt	525.00–530.00	510.00	-0.97
Wire rod mesh quality Europe imports CIF Southern Europe port	Monthly	SB01247	€/mt	525.00–530.00	460.00	-1.08
<b>Wire rod domestic prices</b>						
Wire rod mesh quality North America domestic production Ex-mill US Midwest	Monthly	SB01249	\$/st	525.00–530.00	675.00	0.00
Wire rod Q195 6.5mm China domestic production Shanghai inc. 17% VAT	Weekly	SB01262	Yuan/mt	525.00–530.00	3335.00	+5.37
Wire rod mesh quality Europe domestic production delivered	Monthly	SB01246	€/mt	525.00–530.00	465.00	-3.13
<b>Merchant bar prices</b>						
Merchant bar Turkey exports FOB Turkish port	Monthly	SB01169	\$/mt	525.00–530.00	625.00	+2.04
Merchant bar East Asia imports CFR	Monthly	SB01165	\$/mt	525.00–530.00	690.00	-2.82
Merchant bar Europe imports CIF Southern Europe port	Monthly	SB01167	€/mt	525.00–530.00	560.00	0.00
Merchant bar North America domestic production Ex-mill US Midwest	Monthly	SB01168	\$/st	525.00–530.00	788.00	+1.29
Merchant bar Europe domestic production delivered	Monthly	SB01166	€/mt	525.00–530.00	512.50	-1.44
<b>Beam</b>						
H-beams East Asia imports CFR	Monthly	SB01114	\$/mt	525.00–530.00	690.00	-0.72
H-beams China domestic production Shanghai inc. 17% VAT	Monthly	SB01113	Yuan/mt	525.00–530.00	3625.00	-2.68
WF beams medium North America domestic production Ex-mill US Midwest	Monthly	SB01240	\$/st	525.00–530.00	780.00	0.00
<b>Sections and other</b>						
Medium sections Europe imports CIF Southern Europe port	Monthly	SB01161	€/mt	525.00–530.00	515.00	+0.98
Medium sections Europe domestic production delivered	Weekly	SB01160	€/mt	525.00–530.00	520.00	0.00
Medium sections Turkey exports FOB Turkish port	Monthly	SB01162	€/mt	525.00–530.00	630.00	+1.61
Engineering steel HR round bars C45 50-150mm diameter Northern Europe domestic production delivered	Monthly	SB01102	€/mt	525.00–530.00	590.00	0.00
<b>TSI long product prices</b>						
TSI rebar USA (FOB Midwest Mill)	Weekly	TS01028	\$/st	–	631.00	0.00
TSI rebar Northern Europe (EXW)	Weekly	TS01026	€/mt	–	443.00	-1.56
TSI rebar Southern Europe (EXW)	Weekly	TS01027	€/mt	–	454.00	+0.67

## Pipe and tube

	Frequency	Platts symbol	Unit	Range	Midpoint	% change
WeldPipe S235 48mm diameter 2mm wall Turkey exports FOB Turkish port	Monthly	SB01255	\$/mt	690.00–720.00	705.00	-1.40
WeldTube S235 50-170mm diameter Europe domestic production delivered	Monthly	SB01258	€/mt	530.00–560.00	545.00	-2.68
WeldPipe standard 4 inch black ERW North America domestic production Ex-mill US Midwest	Monthly	SB01256	\$/st	920.00–930.00	925.00	0.00
WeldPipe standard 4 inch black ERW North America imports EDDP Gulf port	Monthly	SB01257	\$/st	840.00–860.00	850.00	0.00
WeldPipe OCTG carbon steel ERW J55 4 1/2-8 5/8 inch North America domestic production Ex-mill US	Monthly	SB01253	\$/st	1150.00–1170.00	1160.00	0.00
WeldPipe OCTG carbon steel ERW J55 4 1/2-8 5/8 inch North America imports EDDP Gulf port	Monthly	SB01254	\$/st	840.00–860.00	850.00	0.00
Seamless pipe 219X6mm grade 8163 China domestic production Shanghai inc. 17% VAT	Weekly	SB01219	Yuan/mt	4050.00–4100.00	4075.00	-1.21
Seamless tube S355 60-160mm diameter Europe domestic production delivered	Monthly	SB01220	€/mt	880.00–930.00	905.00	0.00

## Stainless

	Frequency	Platts symbol	Unit	Range	Midpoint	% change
<b>CR import prices</b>						
CR304 2B 2mm East Asia imports CFR	Weekly	SB01063	\$/mt	2400.00–2500.00	2450.00	+1.03
CR304 2B 14 gauge transaction price inc. surcharge North America imports ex dock duty paid Gulf port	Monthly	SB01057	\$/lb	108.00–111.00	109.50	0.00
CR316 2B 14 gauge transaction price inc. surcharge North America imports ex dock duty paid Gulf port	Monthly	SB01066	\$/lb	156.00–157.00	156.50	0.00
CR430 2B 14 gauge transaction price inc. surcharge North America imports ex dock duty paid Gulf port	Monthly	SB01073	\$/lb	67.00–73.00	70.00	0.00
<b>CR domestic prices</b>						
CR304 2B 2mm coil base Northern Europe domestic production delivered	Monthly	SB01059	€/mt	970.00–1070.00	1020.00	+0.49
CR304 2B 2mm coil transaction price Northern Europe domestic production delivered	Monthly	SB01061	€/mt	2050.00–2150.00	2100.00	+0.72
CR304 2B 2mm coil base Southern Europe domestic production delivered	Monthly	SB01060	€/mt	960.00–1040.00	1000.00	+2.56
CR304 2B 2mm coil transaction price Southern Europe domestic production delivered	Monthly	SB01062	€/mt	2040.00–2120.00	2080.00	+1.71
CR304 2B 14 gauge trayeahnSACTION price inc. surcharge North America domestic production Ex-mill US	Monthly	SB01056	\$/lb	128.00–131.00	129.50	+6.58
CR304 2B 2mm China domestic production Foshan inc. 17% VAT	Monthly	SB01058	Yuan/mt	15200.00–15400.00	15300.00	+0.33
<b>CR domestic prices</b>						
CR316 2B 2mm coil base Northern Europe domestic production delivered	Monthly	SB01067	€/mt	1300.00–1390.00	1345.00	0.00
CR316 2B 2mm coil transaction price Northern Europe domestic production delivered	Monthly	SB01069	€/mt	2880.00–2970.00	2925.00	0.00
CR316 2B 2mm coil base Southern Europe domestic production delivered	Monthly	SB01068	€/mt	1270.00–1340.00	1305.00	0.00
CR316 2B 2mm coil transaction price Southern Europe domestic production delivered	Monthly	SB01070	€/mt	2850.00–2920.00	2885.00	0.00
CR316 2B 14 gauge transaction price inc. surcharge North America domestic production Ex-mill US	Monthly	SB01065	\$/lb	173.00–175.00	174.00	+4.50
CR430 BA 2mm coil base Northern Europe domestic production delivered	Monthly	SB01075	€/mt	830.00–940.00	885.00	-1.67
CR430 BA 2mm coil transaction price Northern Europe domestic production delivered	Monthly	SB01077	€/mt	1250.00–1360.00	1305.00	0.00
CR430 BA 2mm coil base Southern Europe domestic production delivered	Monthly	SB01076	€/mt	820.00–930.00	875.00	+0.57
CR430 BA 2mm coil transaction price Southern Europe domestic production delivered	Monthly	SB01078	€/mt	1240.00–1350.00	1295.00	0.00
CR430 2B 14 gauge transaction price inc. surcharge North America domestic production Ex-mill US	Monthly	SB01072	\$/lb	78.00–81.00	79.50	0.00
CR430 2B 2mm China domestic production Foshan inc. 17% VAT	Monthly	SB01074	€/mt	8200.00–8400.00	8300.00	0.00
CR201 2B 1-2mm China domestic production Foshan inc. 17% VAT	Monthly	SB01053	Yuan/mt	9600.00–9800.00	9700.00	+2.11
<b>Other domestic stainless prices</b>						
HR 304 3mm China domestic production Foshan inc. 17% VAT	Monthly	SB01136	Yuan/mt	14500.00–14600.00	14550.00	+0.34
430F drawn Bar 8-25mm diameter base Europe domestic production delivered	Monthly	SB01005	€/mt	115.00–130.00	122.50	0.00
304L bright bar 25-80mm diameter transaction price Europe domestic production delivered	Monthly	SB01003	€/mt	2425.00–2555.00	2490.00	+2.26
304L bright bar 25-80mm diameter base Europe domestic production delivered	Monthly	SB01002	€/mt	85.00–98.00	91.50	0.00
430F drawn Bar 8-25mm diameter transaction price Europe domestic production delivered	Monthly	SB01006	€/mt	1740.00–1890.00	1815.00	-1.09
<b>Alloy surcharge domestic prices</b>						
Alloy surcharge 304 coil North America domestic production Ex-mill US	Monthly	SB01009	\$/lb	71.92–71.95	71.94	+6.04
Alloy surcharge 316 coil North America domestic production Ex-mill US	Monthly	SB01012	\$/lb	97.99–98.24	98.12	+5.31
Alloy surcharge 430 coil North America domestic production Ex-mill US	Monthly	SB01016	\$/lb	24.51–24.51	24.51	-0.71
Alloy surcharge 304 coil Europe domestic production	Monthly	SB01008	€/mt	1074.00–1084.00	1079.00	-0.74
Alloy surcharge 316 coil Europe domestic production	Monthly	SB01011	€/mt	1571.00–1591.00	1581.00	-1.40
Alloy surcharge 430 coil Europe domestic production	Monthly	SB01015	€/mt	406.00–438.00	422.00	-2.09
Alloy surcharge 304L bright bar Europe domestic production	Monthly	SB01010	€/mt	1450.00–1740.00	1595.00	+3.40
Alloy surcharge 316L bright bar Europe domestic production	Monthly	SB01013	€/mt	2137.00–2380.00	2258.50	+3.13
Alloy surcharge 420 bright bar Europe domestic production	Monthly	SB01014	€/mt	445.00–501.00	473.00	-3.67
Alloy surcharge 430F bright bar Europe domestic production	Monthly	SB01017	€/mt	560.00–630.00	595.00	-2.86



## Semi-finished

	Frequency	Platts symbol	Unit	Range	Midpoint	% change
Billet China domestic production Tangshan inc. 17% VAT	Daily	SB01032	Yuan/mt	2980.00–2980.00	2980.00	-0.67
Billet Turkey exports FOB	Monthly	SB01039	\$/mt	525.00–535.00	530.00	+0.95
Billet East Asia imports CFR	Weekly	SB01035	\$/mt	525.00–530.00	527.50	+0.48
Billet Latin America exports FOB Latin America port	Monthly	SB01037	\$/mt	515.00–520.00	517.50	-0.48
Billet Turkey imports CFR Turkish port	Monthly	SB01040	\$/mt	510.00–520.00	515.00	0.00
Billet FOB Black Sea	Daily	STBLB00	\$/mt		505.00	0.00
Slab Black Sea exports FOB	Monthly	SB01233	\$/mt	490.00–510.00	500.00	+1.01
Slab East Asia imports CFR	Monthly	SB01235	\$/mt	530.00–550.00	540.00	-0.92
Slab Latin America exports FOB Latin America port	Monthly	SB01236	\$/mt	510.00–525.00	517.50	+0.98

## Steel headlines

**World output rose 3.5% to hit record high in 2013**

World production of crude steel last year inc. eased by 3.5% from 2012 to 1,607 million mt, the World Steel Association reported Thursday. This is a new record high.

**For more steel news, please visit: [www.sbb.com](http://www.sbb.com)**

- Mexican mills hike rebar prices, market skeptical
- Beltrame takes steps to close Turin plant
- European arrest order for Fabio Riva
- Vallourec to double its VAM testing capacity in France
- CIS billet prices steady as February negotiations go on
- US sheet prices fall, impacted on multiple fronts
- Indian HRC prices continue to hold firm on stable demand
- Korean shipbuilders seek Q1 price cut for ship plate
- Chinese HRC export prices firm as mills hold ground
- Van Heyghen builds flats service center in Poland
- Bearish sentiment grips Turkish coated coil market
- Severstal NA's Q4 rolled sales down, up for full year
- US HRC slumps to \$670-680/st
- CRC decreases to \$790-800/st in US market
- Brazil's zinc. coated sheet imports boom in 2013
- Vietnamese demand for longs sluggish on 'frozen' real estate
- China's rebar export prices decline on falling ore price
- AM to invest in Luxembourg, keeps Rodange in production
- Reinforcement fiber gaining popularity in Russia: Severstal
- Kuwait mandates KPCC to buy 250,000 mt of subsidized rebar
- Emirates Steel restructures \$1.3 billion debt to cut interest cost
- ESI retains rebar price for February to compete with Turks
- Kingland to commission new pipe mill after holidays
- TMK Ipsco inks pipe contracts with Shell
- DOC finds preliminary OCTG critical circumstances
- Tenaris challenged to ship pipes to Bolivian gas project
- Taigang holds 304 local coil prices, lifts ferritic for Feb
- European stainless: Lead-times lengthen, prices creep up
- ATI's new mill a 'game-changing' investment
- China's new ship orders bounced back in 2013
- Japan shrugs off record 2013 steel output
- Special report: Former CISA head found guilty of corruption
- Chinese manufacturing enters downturn ahead of holiday
- Toyota's caution speaks for all in Thai crisis
- JSPL commissions new slab coticaster at Angul
- Turkish billet and slab output fell notably in 2013
- Eurofer lifts outlook for EU 2014 steel consumption
- Europe steel export surplus fell by 34% in 2013: Eurofer
- Severstal inc. eases 2013 output by 2% in Russian plants
- Mexico's Deacero to invest in power generation
- US steel output falls 2% in 2013; Canada down 7.8%
- LatAm's finished steel production up 1% in 2013
- Revenue at Saudi Zamil Steel in 2013 eases to \$717 million
- Pricing remains flat on bearish raw material sentiment

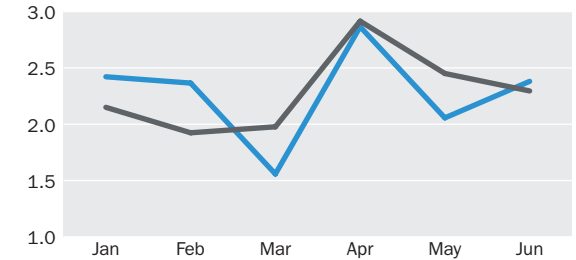
## Steel mill economics: global spreads, April 10, 2014

	Platts symbol	Unit	Spread	Change	% change
China flat steel spread (CFSS using IODEX)*	FSICT00	\$/mt	302.21	+3.86	+1.29
China flat steel spread (CFSS using TSI)*	FSICI00	\$/mt	300.45	+2.74	+0.92
China long steel spread (CLSS using IODEX)	FRMCS00	\$/mt	283.51	+1.43	+0.51
China long steel spread (CLSS using TSI)	SMMCR00	\$/mt	281.75	+0.31	+0.11
China hot metal spread (CHMS using IODEX)*	HMIC00	\$/mt	292.86	+2.64	+0.91
China hot metal spread (CHMS using TSI)*	HMICT00	\$/mt	291.10	+1.52	+0.53
China coking margin (CCM)**	CMIC000	Yuan/mt	350.00	0.00	0.00
China billet-rebar spread (CBRS)	BRSC000	Yuan/mt	310.00	+40.00	+14.81
Turkey scrap-rebar spread (TSRS: Platts)	CMITP00	\$/mt	189.50	+4.50	+2.43
Turkey scrap-rebar spread (TSRS: TSI)	CMITT00	\$/mt	187.50	+4.50	+2.46
Turkey scrap-Black Sea billet spread (TSBS: Platts)	BSSTP00	\$/mt	123.00	+2.00	+1.65
Turkey scrap-Black Sea billet spread (TSBS: TSI)	BSSTT00	\$/mt	121.00	+2.00	+1.68
US scrap-HRC spread (US SHRC)	HSSUI00	\$/st	312.88	0.00	0.00
US scrap-HRC futures spread (US SHRCF)	HFSUP00	\$/st	295.88	0.00	0.00
US scrap-rebar spread (US SRS)	CMIV000	\$/st	277.88	0.00	0.00

\*weekly, assessed on Mondays. \*\*weekly, assessed on Fridays.

For spreads calculation and assessment methodology, please go to: <http://platts.com/IM.Platts.Content/MethodologyReferences/MethodologySpecs/steel.pdf>

## Sample graph



## Platts steel assessments currency and unit comparisons, April 10

		€/mt	\$/mt	Prior assessment \$/st	\$/CWT	\$/mt	\$ change	% change
<b>Hot-rolled coil</b>								
EXW Ruhr*	STHRE00	432.00***	STHRM00 600.26	STHRD00 544.56	STHRH00 27.24	597.20	+3.06	+0.51
FOB Black Sea*	STHBE00	365.24	STHRB00 507.50***	STHBD00 460.40	STHBH00 23.03	507.50	0.00	0.00
CIF Antwerp*	STHRA00	420.00***	STHAM00 583.59	STHAD00 529.43	STHAH00 26.48	580.61	+2.98	+0.51
EXW Indiana**	STHIM00	531.82	STHIE00 738.54	STHRI00 670.00***	STHIH00 33.50	738.54	0.00	0.00
CIF, US Gulf states, basis Houston**	STHGE00	452.44	STHGM00 628.31	STHRG00 570.00***	STHGH00 28.50	628.31	0.00	0.00
<b>Cold-rolled coil</b>								
EXW Ruhr*	STRRE00	512.00***	STRRM00 711.42	STRRD00 645.40	STRRH00 32.28	707.79	+3.63	+0.51
FOB Black Sea*	STRBE00	428.21	STRRB00 595.00***	STRBD00 539.78	STRBH00 27.00	595.00	0.00	0.00
CIF Antwerp*	STRRA00	482.50***	STRAM00 670.43	STRAD00 608.22	STRAH00 30.42	667.01	+3.42	+0.51
EXW Indiana**	STRIE00	631.04	STRIM00 876.32	STRRI00 795.00***	STRIH00 39.75	876.32	0.00	0.00
CIF, US Gulf states, basis Houston**	STRGE00	531.82	STRGM00 738.54	STRRG00 670.00***	STRGH00 33.50	738.54	0.00	0.00
<b>Plate</b>								
EXW Ruhr*	STPRE00	520.00***	STPRM00 722.54	STPRD00 655.49	STPRH00 32.78	716.08	+6.46	+0.90
CIF Antwerp*	STPRA00	430.00***	STPAM00 597.49	STPAD00 542.04	STPAH00 27.11	594.43	+3.06	+0.51
EXW US Southeast**	STPIE00	642.95	STPIM00 892.86	STPRI00 810.00***	STPIH00 40.50	892.86	0.00	0.00
CIF, US Gulf states, basis Houston**	STPGE00	539.76	STPGM00 749.56	STPRG00 680.00***	STPGH00 34.00	749.56	0.00	0.00
<b>Reinforcing bar</b>								
EXW Northwest Europe*	STCBE00	456.00***	STCNM00 633.61	STCND00 574.81	STCNH00 28.75	630.37	+3.24	+0.51
East Mediterranean, basis Turkey*	STCEE00	411.30	STCBM00 571.50***	STCED00 518.46	STCEH00 25.93	569.00	+2.50	+0.44
EXW US Southeast**	STCCE00	504.04	STCCM00 699.96	STCBC00 635.00***	STCCH00 31.75	699.96	0.00	0.00
CIF, US Gulf states, basis Houston**	STCGE00	440.54	STCGM00 611.77	STCBG00 555.00***	STCGH00 27.75	611.77	0.00	0.00

\*LN 16:30 €/\$/ex rate = 1.3776; \*\*NY 16:30 \$/Eur ex rate = 0.7282. \*\*\*the primary assessments and have not been converted



## Exchange steel futures

	Platts symbol	Close	% change
<b>Rebar futures, China (Yuan/mt)</b>			
Shanghai Futures Exchange rebar 1 month	XHRC001	3300.00	+5.36
Shanghai Futures Exchange rebar 2 month	XHRC002	3297.00	+4.27
Shanghai Futures Exchange rebar 3 month	XHRC003	3335.00	+3.31
Shanghai Futures Exchange rebar 4 month	XHRC004	3355.00	+3.23
Shanghai Futures Exchange rebar 5 month	XHRC005	3358.00	+3.16
Shanghai Futures Exchange rebar 6 month	XHRC006	3361.00	+1.85
Shanghai Futures Exchange rebar 7 month	XHRC007	3384.00	+2.17
Shanghai Futures Exchange rebar 8 month	XHRC008	3387.00	+1.56
Shanghai Futures Exchange rebar 9 month	XHRC009	3440.00	+3.02
Shanghai Futures Exchange rebar 10 month	XHRC010	3430.00	+0.97
Shanghai Futures Exchange rebar 11 month	XHRC011	3449.00	+1.35
Shanghai Futures Exchange rebar 12 month	XHRC012	3423.00	-1.01

**Hot-rolled coil futures, US (\$/st)**

	Platts symbol	Close	% change
CME Globex US Midwest domestic HRC 1 month	XNHR001	653.00	0.00
CME Globex US Midwest domestic HRC 2 month	XNHR002	668.00	0.00
CME Globex US Midwest domestic HRC 3 month	XNHR003	667.00	0.00
CME Globex US Midwest domestic HRC 4 month	XNHR004	646.00	-0.31
CME Globex US Midwest domestic HRC 5 month	XNHR005	644.00	-0.31
CME Globex US Midwest domestic HRC 6 month	XNHR006	644.00	-0.31
CME Globex US Midwest domestic HRC 7 month	XNHR007	642.00	-0.31
CME Globex US Midwest domestic HRC 8 month	XNHR008	642.00	-0.31
CME Globex US Midwest domestic HRC 9 month	XNHR009	642.00	-0.31
CME Globex US Midwest domestic HRC 10 month	XNHR010	636.00	-0.16
CME Globex US Midwest domestic HRC 11 month	XNHR011	636.00	-0.16
CME Globex US Midwest domestic HRC 12 month	XNHR012	636.00	-0.16

## Steel industry data

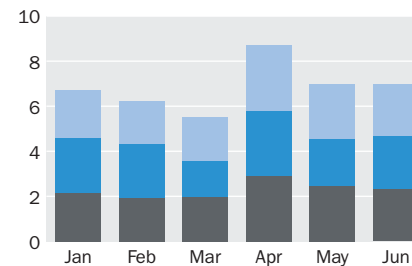
	Platts symbol	('000 mt)	Change
<b>Monthly crude steel production</b>			
World (66 reporting countries)	IISIA03	124990.39	-11704.73
Asia	IISIC03	83707.47	-9206.39
Europe EU	IISIE03	13123.62	-1180.97
Europe Other	IISII03	2847.21	-176.74
CIS	IISID03	8188.00	-783.05
North America	IISIG03	9131.00	-897.30
South America	IISIJ03	3380.33	-186.96
Africa/Middle East	IISIK03	3201.70	+111.26
Oceania	IISIH03	468.85	+53.04

Source: World Steel Association

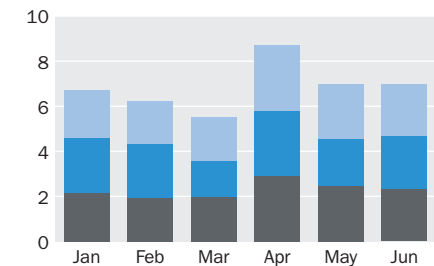
**American Iron and Steel Institute data**

	Platts symbol	Close	% change
AISI raw steel US production weekly (tons)	AISII04	1762000.00	-58000.00
AISI raw steel US capability utilization weekly (%)	AISIH04	73.30	-2.40

## Sample graph



## Sample graph



## STEEL PRICE REPORT

Sample issue

Editorial: Singapore +65-6530-6530. London +44-20-7176-6063. Lausanne: +41-21-321-1444. Montreal: +1-450-332-8648. Houston +1-713-658-3206. Brazil: +55-11-2626-0648.

Client services information: North America: 800-PLATTS8 (800-752-8878); direct: +1-212-904-3070; Europe & Middle East: +44-20-7176-6111 Asian Pacific: +65-6530-6430 Latin America: +54-11-4121-4810, E-mail: support@platts.com

Copyright © 2014 McGraw Hill Financial. All rights reserved. No portion of this publication may be photocopied, reproduced, retransmitted, put into a computer system or otherwise redistributed without prior written authorization from Platts. Platts is a trademark of McGraw Hill Financial. Information has been obtained from sources believed reliable. However, because of the possibility of human or mechanical error by sources, McGraw Hill Financial or others, McGraw Hill Financial does not guarantee the accuracy, adequacy or completeness of any such information and is not responsible for any errors or omissions or for results obtained from use of such information. See back of publication invoice for complete terms and conditions.